

Holiday Inn Resort Phuket

Located in the heart of Patong, just steps away from Phuket's famous beach, Holiday Inn Resort Phuket is an oasis within walking distance to key shopping centres, restaurants and bars, and Soi Bangla nightlife. The contemporary designed Main Wing is popular for Kids and family-friendly rooms and facilities.

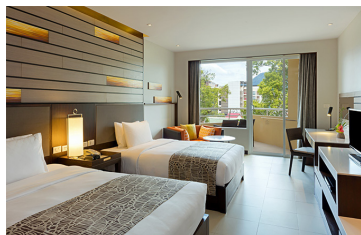
Main Wing



1 King Bed Standard Room 33 sq.m.

Maximum of 2 adults and 2 kids below 12 years old

- 110 king rooms with bed size 195 × 200 cm. and a sofa
- Patong city view
- Choice of a bathtub or larger walk-in shower



2 Double Beds Standard Room 33 sq.m.

Maximum of 2 adults and 2 kids below 12 years old

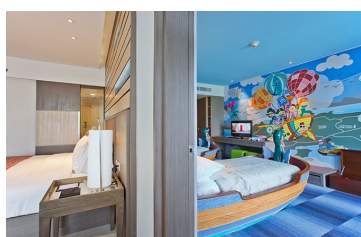
- 115 twin rooms with 2 double bed size 140 × 200 cm. and a sofa
- Patong city view
- Choice of a bathtub or larger walk-in shower



1 King 1 Bunk Bed Standard Family Room 33 sq.m.

Maximum of 2 adults and 2 kids below 12 years old

- 6 king rooms with bed size 195 × 200 cm.
- Kids corner with bunk beds size 90 × 180 cm.
- Separate kids area with TV, PS4 and toy box



1 King 2 Single 2 Bedrooms Family Suite 66 sq.m.


Maximum of 2 adults and 2 kids below 12 years old

- 10 king rooms with a bed size 195 × 200 cm. connected to 2 beds in boat or turtle form size 90 × 180 cm.
- Pirate or Sea World themed Kids' room
- Kids room with their own bathroom, TV, PS4, and toy box



1 King Suite Pool View Furnished Balcony 55 sq.m.


Maximum of 2 adults

- 12 king rooms with bed size 240 × 200 cm. and a single daybed
- Spacious balcony overlooking the Main Wing swimming pool
- Oversized bathroom with both bathtub and shower
- Complimentary daily replenishment of the minibar
- Complimentary  espresso machine and coffee



2 Double Suite Pool View Furnished Balcony 55 sq.m.


Maximum of 2 adults

- 4 twin rooms with two double bed size of 140 × 200 cm. and a single daybed
- Spacious balcony overlooking the Main Wing swimming pool
- Oversized bathroom with both bathtub and shower
- Complimentary daily replenishment of the minibar
- Complimentary  espresso machine and coffee



1 King 1 Bedroom Suite Sea View Balcony 120 sq.m.

Maximum of 2 adults

- Separate bedroom and living areas with a king-size bed of 195 × 200 cm.
- Private sea-facing terrace with sun loungers
- Generous bathroom with both bubble tub and rain shower and a walk-in dressing room
- Complimentary daily replenishment of the minibar
- Complimentary  espresso machine and coffee

In-Room Amenities

- Slipper and bathrobe are on request
- Flat-screen TV
- Iron and ironing board
- Hairdryer
- Minifridge (No-compressor)
- Private balcony
- Free Wi-Fi
- In-room safe

Holiday Inn Resort Phuket

Elevate your stay to fabulous "resort within the resort" Busakorn Premium Wing experience to enjoy exclusive access to the two stunning Busakorn Premium swimming pools, as well as full use of all the facilities of the Main Wing.

Busakorn Premium Wing



1 King Premium City View Balcony 42 sq.m.

Maximum of 2 adults and 1 kid below 12 years old

- 13 king rooms with a king-size bed (195 × 200 cm).
- Daybed (75 × 150 cm).
- 43" flat-screen TV, private dressing area, separate walk-in shower, and toilet room.



1 King Premium Pool View Balcony 42 sq.m.

Maximum of 2 adults and 1 kid below 12 years old

- 46 king rooms with a king-size bed (195 × 200 cm).
- Daybed (75 × 150 cm).
- 43" flat-screen TV, private dressing area, separate walk-in shower, and toilet room.



2 Single Premium Pool View Balcony 42 sq.m.


Maximum of 2 adults and 1 kid below 12 years old

- 28 twin rooms with two double beds (125 × 200 cm).
- Daybed (75 × 150 cm).
- 43" flat-screen TV, private dressing area, separate walk-in shower, and toilet room.



1 King Premium Pool View Ground Floor 42 sq.m.


Maximum of 2 adults and 1 kid below 12 years old

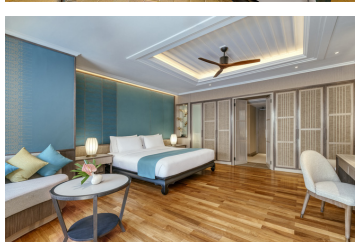
- 12 king rooms with a king-size bed (195 × 200 cm)
- 43" flat-screen TV, private dressing area, separate walk-in shower, and toilet room.
- Complimentary daily replenishment of the minibar.
- Complimentary  espresso machine and coffee.



2 Single Premium Pool View Ground Floor 42 sq.m.


Maximum of 2 adults and 1 kid below 12 years old

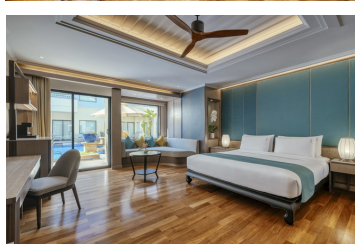
- 5 twin rooms with two double beds (125 × 200 cm)
- 43" flat-screen TV, private dressing area, separate walk-in shower, and toilet.
- Complimentary daily replenishment of the minibar.
- Complimentary  espresso machine and coffee.



1 King Premium Villa Pool View Adults Only 50 sq.m.


Maximum of 2 adults only (Aged 18 years old and over)

- 18 king rooms with a king size 195 × 200 cm.
- 55" flat screen TV, private dressing area, separate walk-in shower, and toilet room
- Separate walk-in shower, and toilet room
- Complimentary daily replenishment of the minibar
- Complimentary  espresso machine and coffee



1 King Premium Villa Pool Access Adults Only 50 sq.m.

Maximum of 2 adults only (Aged 18 years old and over)

- 18 rooms with a king-size bed (195 × 200 cm)
- 55" flat-screen TV, private dressing area, separate walk-in shower, and toilet room.
- Complimentary daily replenishment of the minibar.
- Complimentary  espresso machine and coffee.

In-Room Amenities

- Flat-screen TV
- Access to all Main Wing facilities
- Tea & coffee-making facilities
- Iron and ironing board
- Hairdryer
- Minifridge (No-compressor)
- Private balcony
- Free Wi-Fi
- In-room safe
- Radio alarm clock



IHG[®] HOTELS & RESORTS

PHUKET

Holiday Inn Resort Phuket

Facilities

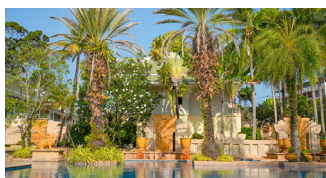
The Holiday Inn Resort Phuket pairs the excitement of Patong Beach with adrenalin-fuelled leisure activities.



Main Wing Pool

Opening times: 08:00 - 19:00 hrs.

- With shaded swim in bubble water features
- Large free-form pool with a depth of 1.20 m.

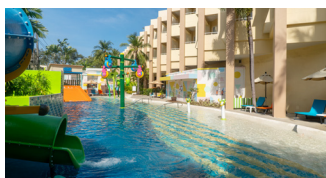


Busakorn Premium Wing Pool

(exclusive access for only Busakorn Premium Wing guests)

Opening times: 08:00 - 19:00 hrs.

- Large tropical free-form pool with a swim-up bar.
- Pool depth: 1.20 m.



Main Wing Kids Pools

Opening times: 09:00 - 17:00 hrs.

- Family pool with a depth of 1.00 m and a separate toddler pool with a depth of 0.40 m.



FunLAB

Opening times: 12:00 - 19:00 hrs.

Calling all young explorers to think big, and create something unforgettable.



Kids Club & Playground

Opening times: 09:00 - 17:00 hrs.

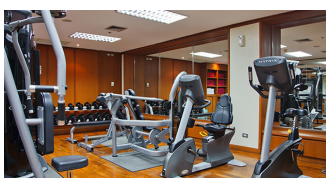
- Free entry for children aged 5 - 12 years old.
- Children's activities: Videos, games, and arts & crafts.



Splash Zone

Opening times: 09:00 - 19:00 hrs.

- A shallow pool with a colourful splash pad water play area for kids.
- Pool depth: 0.15 m.

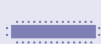


Fitness Centre

Opening times: 24-hour service

Hotel fitness centre is provided access to hotel guests only.

Meeting Rooms



Taksina room 1, 2, or 3

8 x 12.5 x 3.4 m

10

15

30

30

40

Taksina room 1 - 3

24 x 12.5 x 3.4 m

50

60

120

120

150



Holiday Inn Resort Phuket

52 Thaweewong Road, Patong Beach, Kathu, Phuket, 83150

T: +66 (0) 7637 0200 F: +66 (0) 7634 9999

Email: reservation@holidayinn-phuket.com

phuket.holidayinnresorts.com



IHG HOTELS & RESORTS

Holiday Inn Resort Phuket

Dining

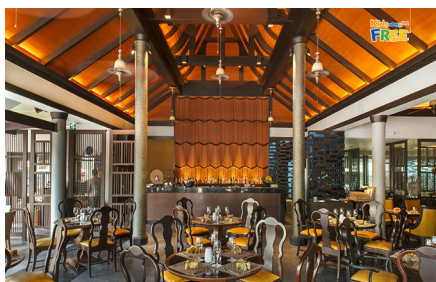
Tantalize your taste buds with a selection of Thai and international cuisine in Patong with a choice of four restaurants and bars.



Sea Breeze Café & Terrace

Overlooking the Main Wing pool in bright & friendly vibes, the restaurant is best known for its extensive buffet breakfast.

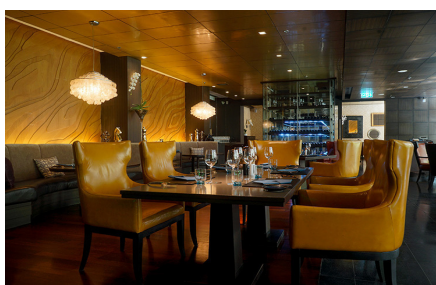
Location: Main Wing
Cuisine: Buffet breakfast
Seating capacity: 152 seats
Breakfast times: 06:30 - 11:00 hrs



Charm Thai Restaurant

Great value Thai food and best breakfast buffet.

Location: Busakorn Premium Wing
Cuisine: Thai Food
Seating capacity: 112 seats
Opening times: 06:30 - 23:00 hrs (last order: 22:30 hrs)
Breakfast times: 06:30 - 11:00 hrs.



Sam's Steaks & Grill

Best steak in town, limited seating offers with a romantic atmosphere for a special night out

Location: Main Wing
Cuisine: Steaks
Seating capacity: 34 seats
Operating times: Closed on Mondays
Opening times: 18:00 - 23:00 hrs. (last order: 22:30 hrs.)



Terrazzo Ristorante & Bar

A modern Italian restaurant with open kitchen and a pizza brick oven

Location: Main Wing
Cuisine: Italian menu
Seating capacity: 130 seats
Live music: Monday to Saturday from 18:30 hrs. to 22:30 hrs.
Opening times: 12:00 - 23:00 hrs. (last order: 22:30 hrs.) daily.



Grab & Go

Start your day or recharge anytime with freshly brewed Thai and Italian coffee and grab your favourite food.

Location: Main Wing
Opening times: 7:00 - 19:00 hrs.

