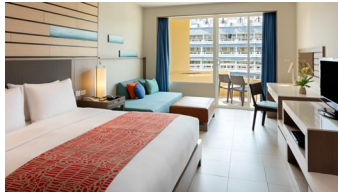


# Accommodation Main Wing



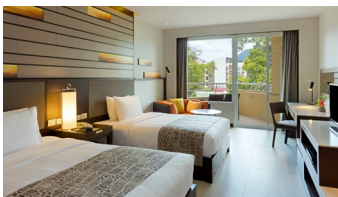
We are a family haven in vibrant Patong Beach, a genuinely friendly Phuket resort offering a refreshing sense of escapism and fun holiday experiences.

The simple joy of being together!



## 1 King Bed Standard Room 33 sq.m.

- Maximum of 2 adults and 2 kids below 12 years old
- 110 king rooms with bed size 195 × 200 cm. and a sofa
  - Choice of a bathtub or larger walk-in shower
  - Patong city view



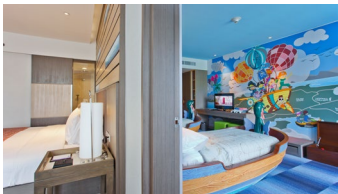
## 2 Double Beds Standard Room 33 sq.m.

- Maximum of 2 adults and 2 kids below 12 years old
- 115 twin rooms with 2 double bed size 140 × 200 cm. and a sofa
  - Choice of a bathtub or larger walk-in shower
  - Patong city view



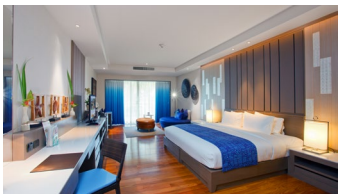
## 1 King 1 Bunk Bed Standard Family Room 33 sq.m.

- Maximum of 2 adults and 2 kids below 12 years old
- 6 king rooms with bed size 195 × 200 cm.
  - Kids corner with bunk beds size 90 × 180 cm.
  - Separate kids area with TV, PS4 and toy box



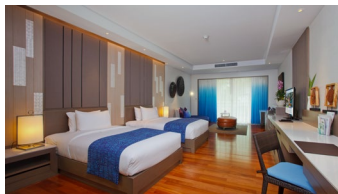
## 1 King 2 Single 2 Bedrooms Family Suite 66 sq.m.

- Maximum of 2 adults and 2 kids below 12 years old
- 10 king rooms with a bed size 195 × 200 cm. connected to 2 beds in boat or turtle form size 90 × 180 cm.
  - Pirate or Sea World themed Kids' room
  - Kids room with their own bathroom, TV, PS4, and toy box



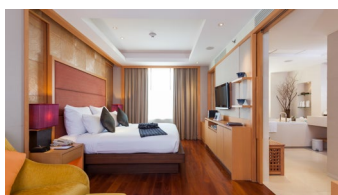
## 1 King Suite Pool View Furnished Balcony 55 sq.m.

- Maximum of 2 adults and 2 kids below 12 years old
- 12 king rooms with bed size 240 × 200 cm. and a single daybed
  - Spacious balcony overlooking the Main Wing swimming pool
  - Oversized bathroom with both bathtub and shower
  - Complimentary daily replenishment of the minibar
  - Complimentary espresso machine and coffee



## 2 Double Suite Pool View Furnished Balcony 55 sq.m.

- Maximum of 2 adults
- 4 twin rooms with two double bed size of 140 × 200 cm. and a single daybed
  - Spacious balcony overlooking the Main Wing swimming pool
  - Oversized bathroom with both bathtub and shower
  - Complimentary daily replenishment of the minibar
  - Complimentary espresso machine and coffee



## 1 King 1 Bedroom Suite Sea View Balcony 120 sq.m.

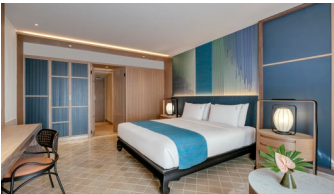
- Maximum of 2 adults
- Separate bedroom and living areas with a king-size bed of 195 × 200 cm.
  - Private sea-facing terrace with sun loungers
  - Generous bathroom with both bathtub and rain shower and a walk-in dressing room
  - Complimentary daily replenishment of the minibar
  - Complimentary espresso machine and coffee

# Accommodation Busakorn Premium Wing



Elevate your stay to the fabulous "resort within the resort" Busakorn Premium Wing experience with exclusive access to two stunning Busakorn Premium swimming pools and all Main Wing facilities.

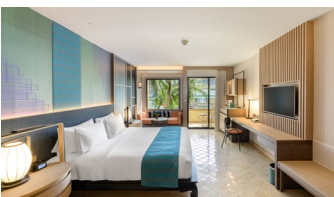
\*Busakorn Premium Wing pool access is exclusive to Busakorn Premium Wing guests.



## 1 King Premium City View Balcony 42 sq.m.

Maximum of 2 adults and 1 kid below 12 years old

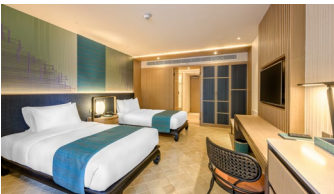
- 13 king rooms with a king-size bed (195 x 200 cm).
- Daybed (75 x 150 cm).
- 43" flat-screen TV, private dressing area, separate walk-in shower, and toilet room



## 1 King Premium Pool View Balcony 42 sq.m.

Maximum of 2 adults and 1 kid below 12 years old

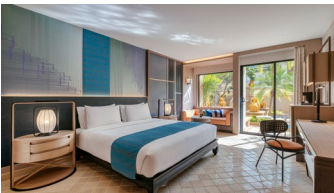
- 46 king rooms with a king-size bed (195 x 200 cm)
- Daybed (75 x 150 cm)
- 43" flat-screen TV, private dressing area, separate walk-in shower, and toilet room



## 2 Single Premium Pool View Balcony 42 sq.m.

Maximum of 2 adults and 1 kid below 12 years old

- 28 twin rooms with two double beds (125 x 200 cm)
- Daybed (75 x 150 cm)
- 43" flat-screen TV, private dressing area, separate walk-in shower, and toilet room



## 1 King Premium Pool View Ground Floor 42 sq.m.

Maximum of 2 adults and 1 kid below 12 years old

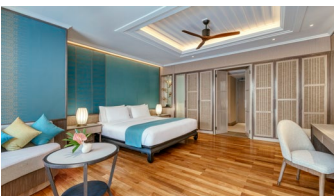
- 12 king rooms with a king-size bed (195 x 200 cm)
- 43" flat-screen TV, private dressing area, separate walk-in shower, and toilet room
- Complimentary daily replenishment of the minibar
- Complimentary espresso machine and coffee



## 2 Single Premium Pool View Ground Floor 42 sq.m.

Maximum of 2 adults and 1 kid below 12 years old

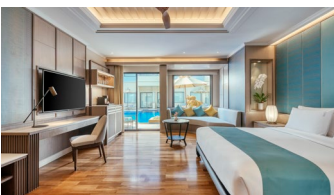
- 5 twin rooms with two double beds (125 x 200 cm)
- 43" flat-screen TV, private dressing area, separate walk-in shower, and toilet
- Complimentary daily replenishment of the minibar
- Complimentary espresso machine and coffee



## 1 King Premium Villa Pool View Adults Only 50 sq.m.

Maximum of 2 adults only (Aged 18 years old and over)

- 18 king rooms with a king size 195 x 200 cm.
- 55" flat screen TV, private dressing area, separate walk-in shower, and toilet room
- Separate walk-in shower, and toilet room
- Complimentary daily replenishment of the minibar
- Complimentary espresso machine and coffee



## 1 King Premium Villa Pool Access Adults Only 50 sq.m.

Maximum of 2 adults only (Aged 18 years old and over)

- 18 rooms with a king-size bed (195 x 200 cm)
- 55" flat-screen TV, private dressing area, separate walk-in shower, and toilet room
- Complimentary daily replenishment of the minibar
- Complimentary espresso machine and coffee

# Facilities

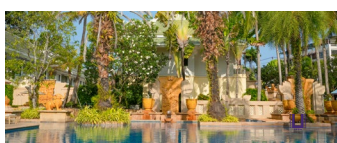
The Holiday Inn Resort Phuket pairs the excitement of Patong Beach with adrenalin-fuelled leisure activities



## Main Wing Pool

Opening times: 08:00 - 19:00 hrs.

- With shaded swim in bubble water features
- Large free-form pool with a depth of 1.20 m.



## Busakorn Premium Wing Pool

(exclusive access for only Busakorn Premium Wing guests)

Opening times: 08:00 - 19:00 hrs.

- Large tropical free-form pool with a swim-up bar.
- Pool depth: 1.20 m.



## Fitness Centre

Opening times: 24-hour service

Hotel fitness centre is provided access to hotel guests only.



## Kids' Club

Opening times: 09:00 - 17:00 hrs.

A fun and safe space where children can play, learn, and make new friends through creative activities.

Complimentary access for children aged 5 - 12 years.

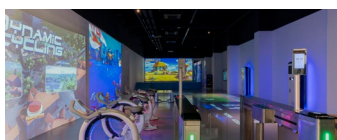


## Family Pool

Opening times: 09:00 - 17:00 hrs.

Our Family Pool is designed for young explorers to splash, play, and enjoy water fun together in a safe and family-friendly environment.

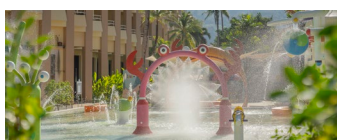
Pool depth: 1.00 m.



## FunLAB

Opening times: 12:00 - 19:00 hrs.

Step into FunLAB, where imagination comes alive. Young explorers can play, create, and power up in an interactive space where every move becomes part of the game.



## Splash Zone

Opening times: 09:00 - 19:00 hrs.

A vibrant water playground designed for young children, featuring colourful splash pad fountains and shallow water play areas.

Pool depth: 0.15 m.



## Toddler Pool

Opening times: 09:00 - 17:00 hrs.

Designed for the resort's youngest guests, the Toddler Pool offers a safe and gentle splash environment for little ones to enjoy playful moments under the Phuket sun.

Pool depth: 0.40 m.



## Meeting Rooms

Taksina room 1, 2, or 3

Taksina room 1 - 3



8 x 12.5 x 3.4 m

24 x 12.5 x 3.4 m



10

50



15

60



30

120



30

120



40

150

# Dining

Tantalize your taste buds with a selection of Thai and international cuisine in Patong with a choice of restaurants and bars.



**Holiday Inn**  
**RESORT**  
— BY IHG —

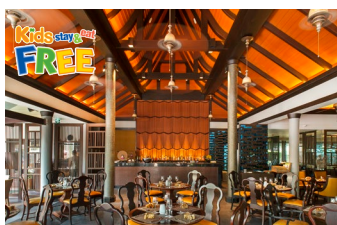
PHUKET



## Sea Breeze Café & Terrace

Overlooking the Main Wing pool in bright & friendly vibes, the restaurant is best known for its extensive buffet breakfast.

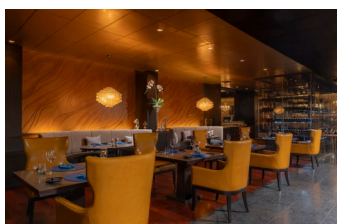
**Location:** Main Wing  
**Cuisine:** Buffet breakfast  
**Seating capacity:** 152 seats  
**Breakfast times:** 06:30 – 11:00 hrs.



## Charm Thai Restaurant

Great value Thai food and best breakfast buffet.

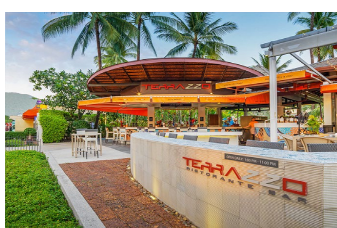
**Location:** Busakorn Premium Wing  
**Cuisine:** Thai Food  
**Seating capacity:** 112 seats  
**Opening times:** 06:30 - 23:00 hrs. (last order: 22:30 hrs)  
**Breakfast times:** 06:30 - 11:00 hrs.



## Sam's Steaks & Grill

The Original Grill Since 1991.

**Location:** Main Wing  
**Cuisine:** Steaks  
**Seating capacity:** 34 seats  
**Opening times:** 17:00 - 23:00 hrs (last order: 22:30 hrs) Closed on Mondays



## Terrazzo Ristorante & Bar

A modern Italian restaurant with open kitchen and a pizza brick oven.

**Location:** Main Wing  
**Cuisine:** Italian menu  
**Seating capacity:** 130 seats  
**Live music:** Monday to Saturday from 18:30 hrs. to 22:30 hrs  
**Opening times:** 12:00 - 23:00 hrs (last order: 22:30 hrs)



## Grab & Go

Start your day or recharge anytime with freshly brewed Thai and Italian coffee and grab your favourite food.

**Location:** Main Wing  
**Opening times:** 07:00 - 19:00 hrs.

